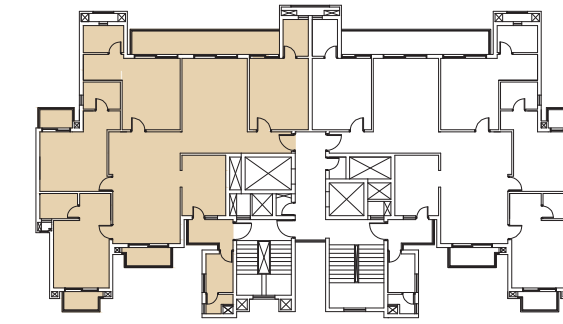
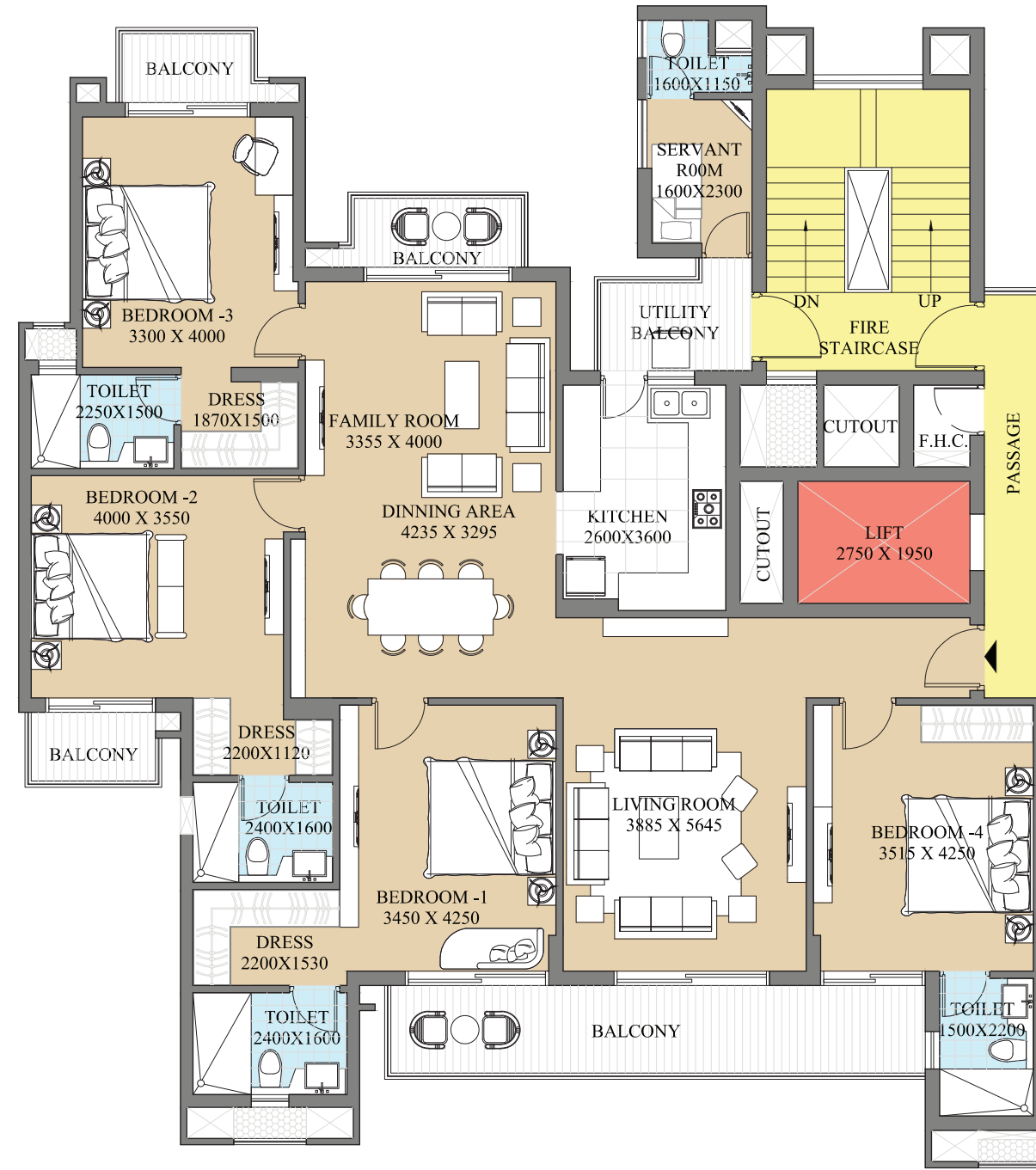




ATS
The better way home.

DESTINAIRE
Sector-1, Greater Noida (W)

Typical Floor Unit- Type A



KEY PLAN

Super Area= 236.90 sq. m
 #197.97 sq. m (Built-up Area)
 + 38.92 sq. m (Common Circulation + Services)
 Carpet Area= 152.87 sq. m

Super Area= 2550 sq.ft.
 #2131 sq. ft. (Built-up Area)
 + 419 sq. ft. (Common Circulation + Services)
 Carpet Area= 1645 sq. ft.

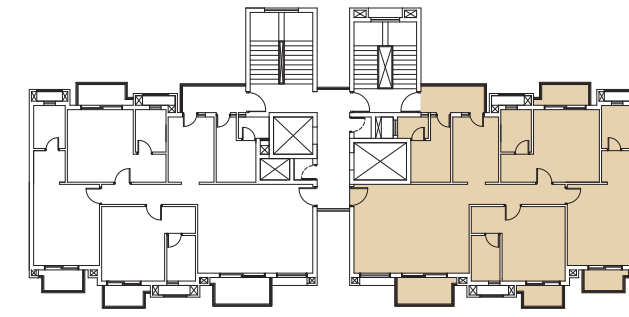
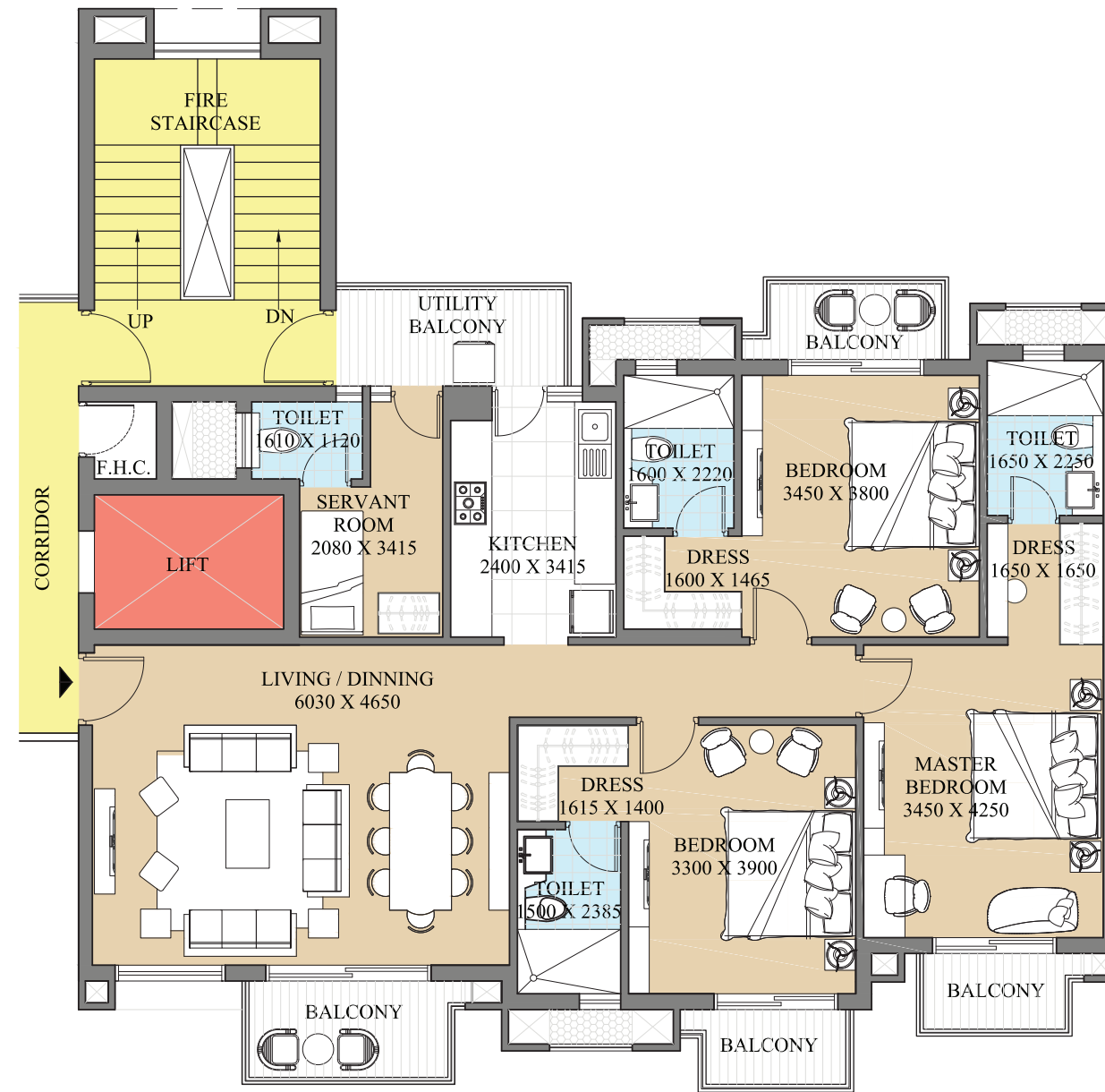
NOTE:

1. The window size/its location in rooms may change because of elevational features.
2. The overall layout may vary because of statutory reasons in case required.
3. Currently, no columns are shown in the plan which will be incorporated as per structure.
4. Each tower and apartment might have slight deviation to the layout, size and type and the picture herein depicts only typical floor plan, it is therefore recommended to verify the layout, size and type of your apartment prior to submission of application for Allotment of Apartment.

Isometric view- Type A



Typical Floor Unit- Type B



KEY PLAN

Super Area= 176.51 sq. m
 #144.61 sq. m (Built-up Area)
 + 31.90 sq. m (Common Circulation + Services)
 Carpet Area= 113.32 sq. m

Super Area= 1900 sq. ft.
 #1557 sq. ft. (Built-up Area)
 + 343 sq. ft. (Common Circulation + Services)
 Carpet Area= 1220 sq. ft.

NOTE:

1. The window size/its location in rooms may change because of elevational features.
2. The overall layout may vary because of statutory reasons in case required.
3. Currently, no columns are shown in the plan which will be incorporated as per structure.
4. Each tower and apartment might have slight deviation to the layout, size and type and the picture herein depicts only typical floor plan, it is therefore recommended to verify the layout, size and type of your apartment prior to submission of application for Allotment of Apartment.

Isometric view- Type B





ABOUT US

Assurance, Transparency and Sincerity spell ATS. A real estate developer of concepts based on consumer insight and architectural delight, the group is responsible for creating some of the most premium residential and commercial spaces primarily in North India. All projects bear testimony to a commitment towards timely delivery and attention to specifics. Quality being a given.





ATS Grand Realtors Private Limited
Site Address: GH 14, Sector 1, Greater Noida (West)
RERA Registration No.: UPRERAPPJ417134
Corporate Office: ATS Tower, Plot No. 16, Sector 135, Noida. Ph.: 0120-7111500

   ATS Infrastructure Ltd.  ATS Greens Ltd. | www.atsgreens.com | Sales@atsgreens.com

Member:
